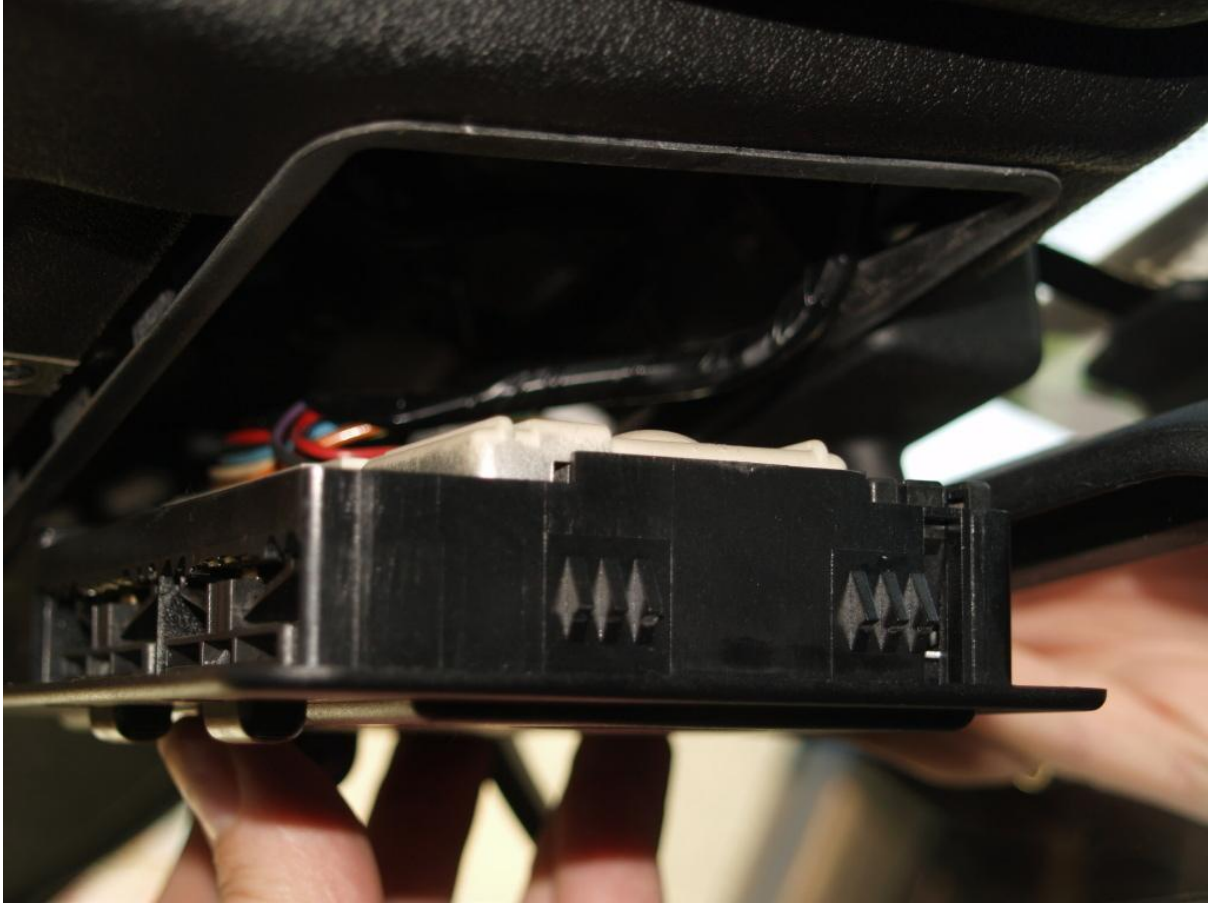
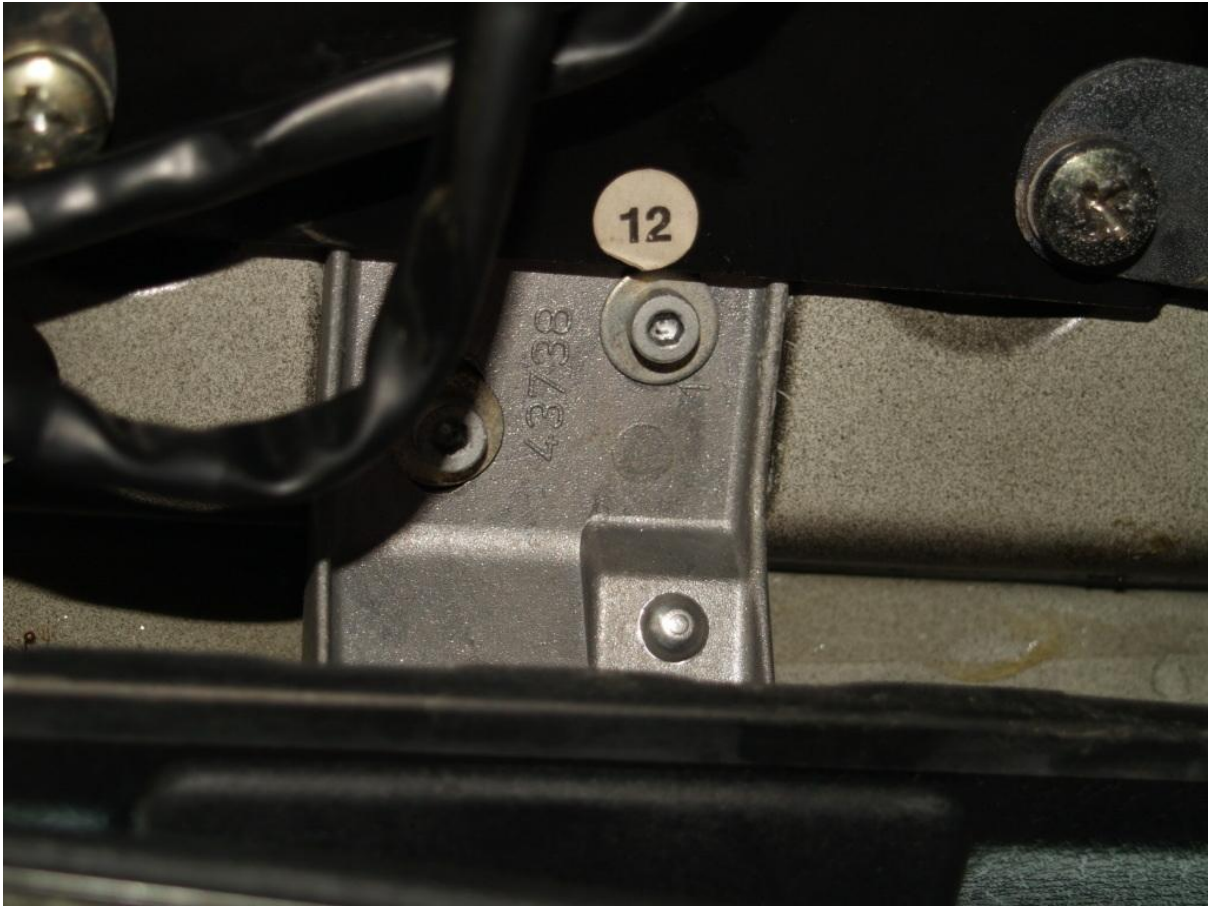


## Curing a wobbling rear view mirror

This is one of those tasks which is easier with pictures...



Slide the light unit to the left and allow the right hand side to drop out of the fixture; disconnect the wires and remove.



Remove the two Allen bolts holding the mirror frame to the roof, and remove the frame.



On the back of the mirror is a single 7mm bolt; this works loose and should be tightened.

Reassembly is a reversal of the above procedures.